



## Installation Procedure

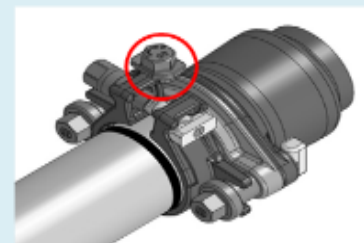
### ① Mark the amount of pipe inserted.

- Measure the amount of pipe to be inserted and mark the line.



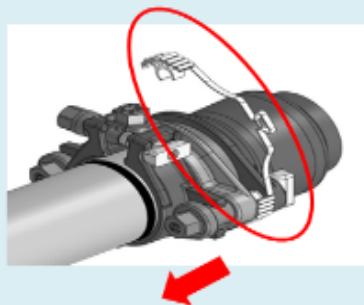
### ④ Remove the release nut.

- Remove the release nut.



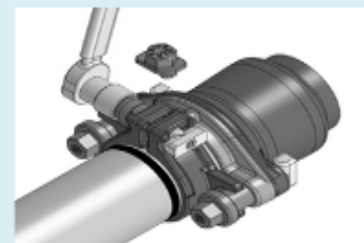
### ② Insert the pipe.

- Insert the joint up to the marked line without disassembling.
- Remove the temporary fixing spacer.



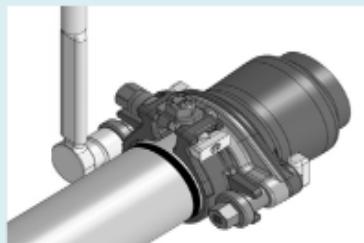
### ⑤ Give final tightening to the stop ring.

- Give final tightening to the stop ring (tightening up to the stopper).



### ③ Give final tightening to the push ring. ⑥ Complete installation

- Give final tightening to the push ring (tightening up to the stopper).



- Check clearance at both ends.

